

# 2011 IAEM Health Emergency Manager Survey

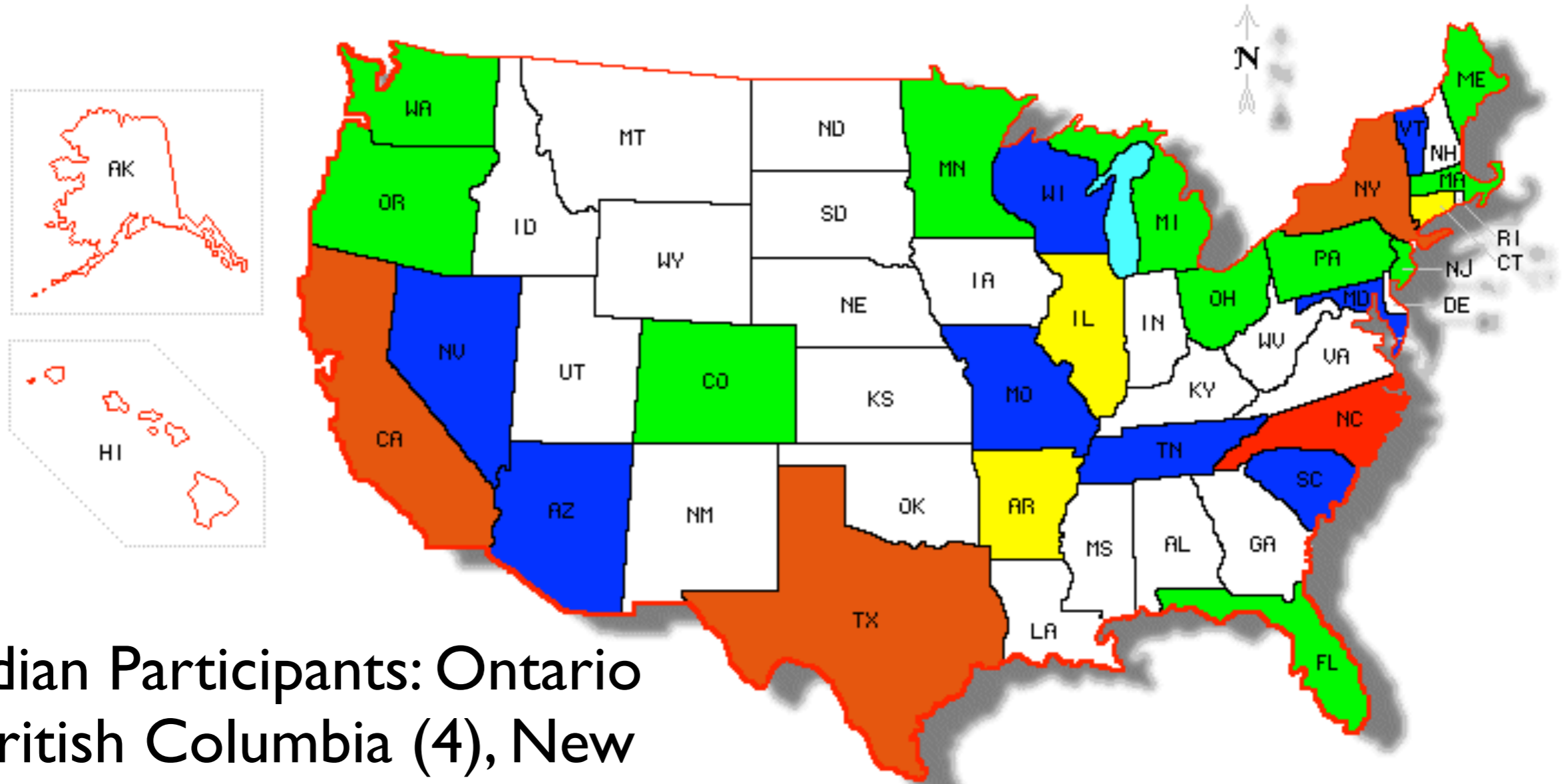
IAEM Health Caucus

- About the Survey:**
- Promoted Through IAEM, Linked In, & Yahoo listservs**
  - 112 Respondents**
  - Using SurveyMonkey**

## Respondents

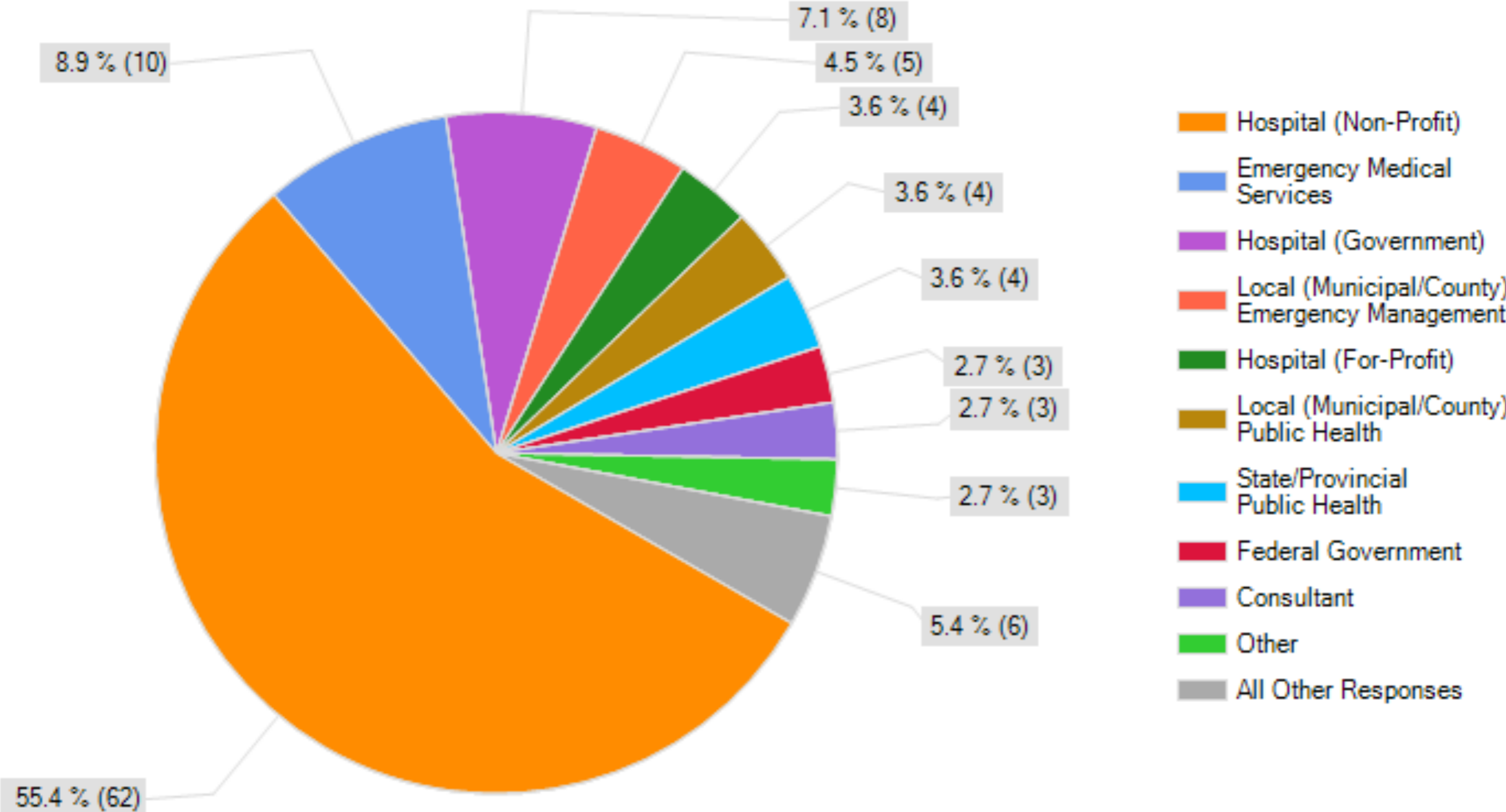
- - 10
- - 8-10
- - 4-7
- - 2-3
- - 1

# Respondents, By State

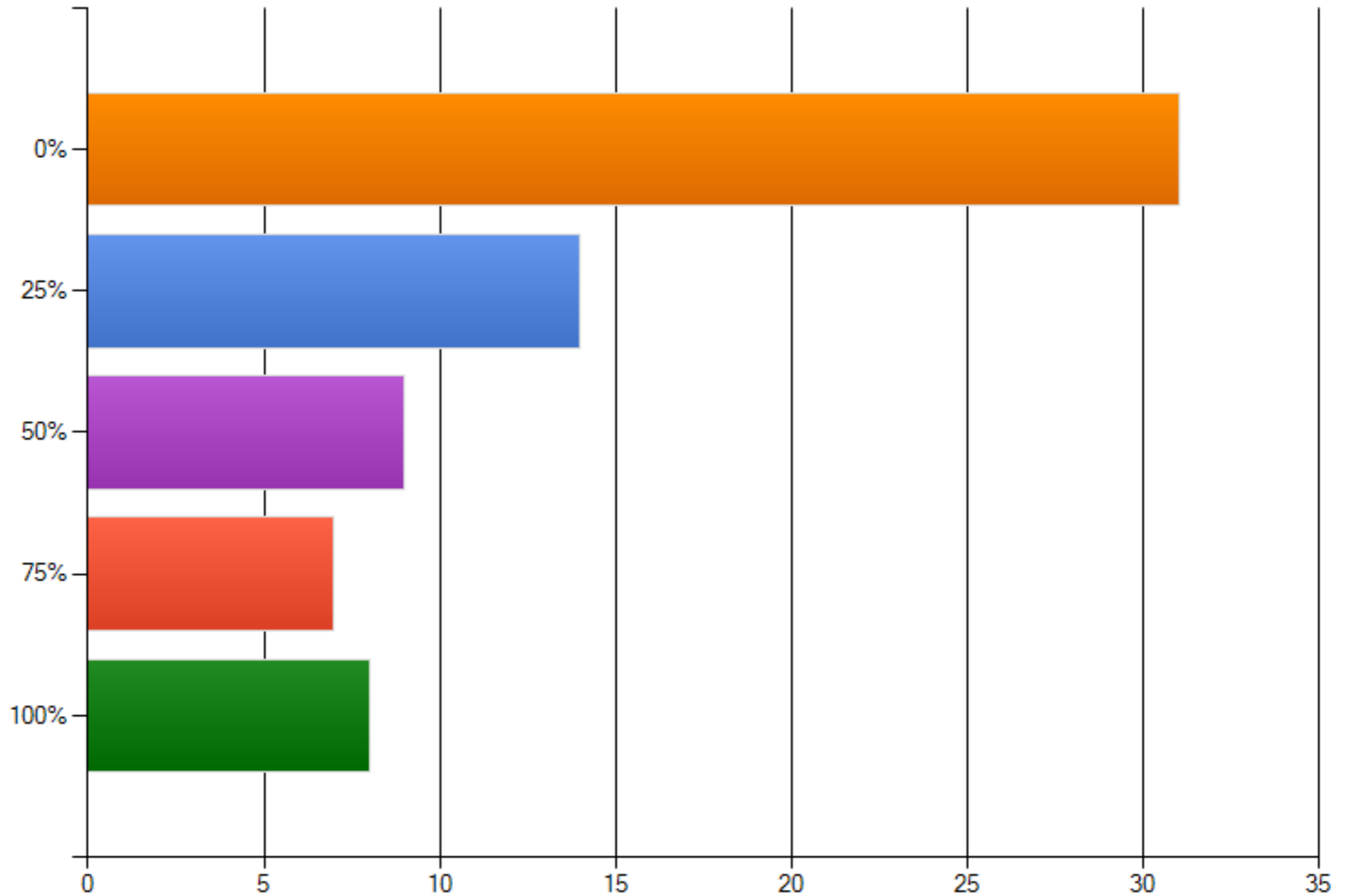


Canadian Participants: Ontario (4), British Columbia (4), New Brunswick (3), Alberta (2)  
ANZAC Participants: NSW (1), NZ (1)

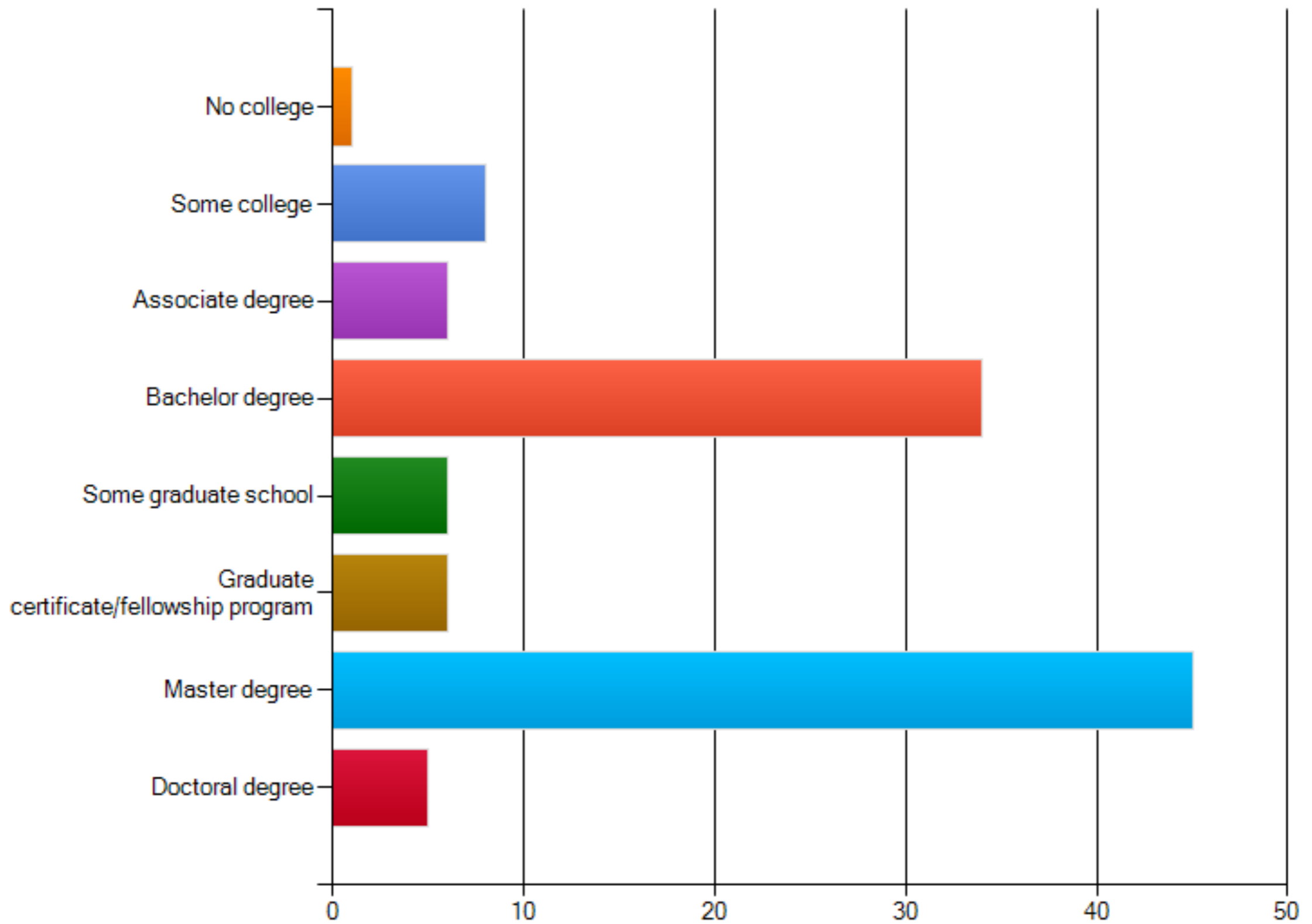
I primarily work for this type of healthcare organization:



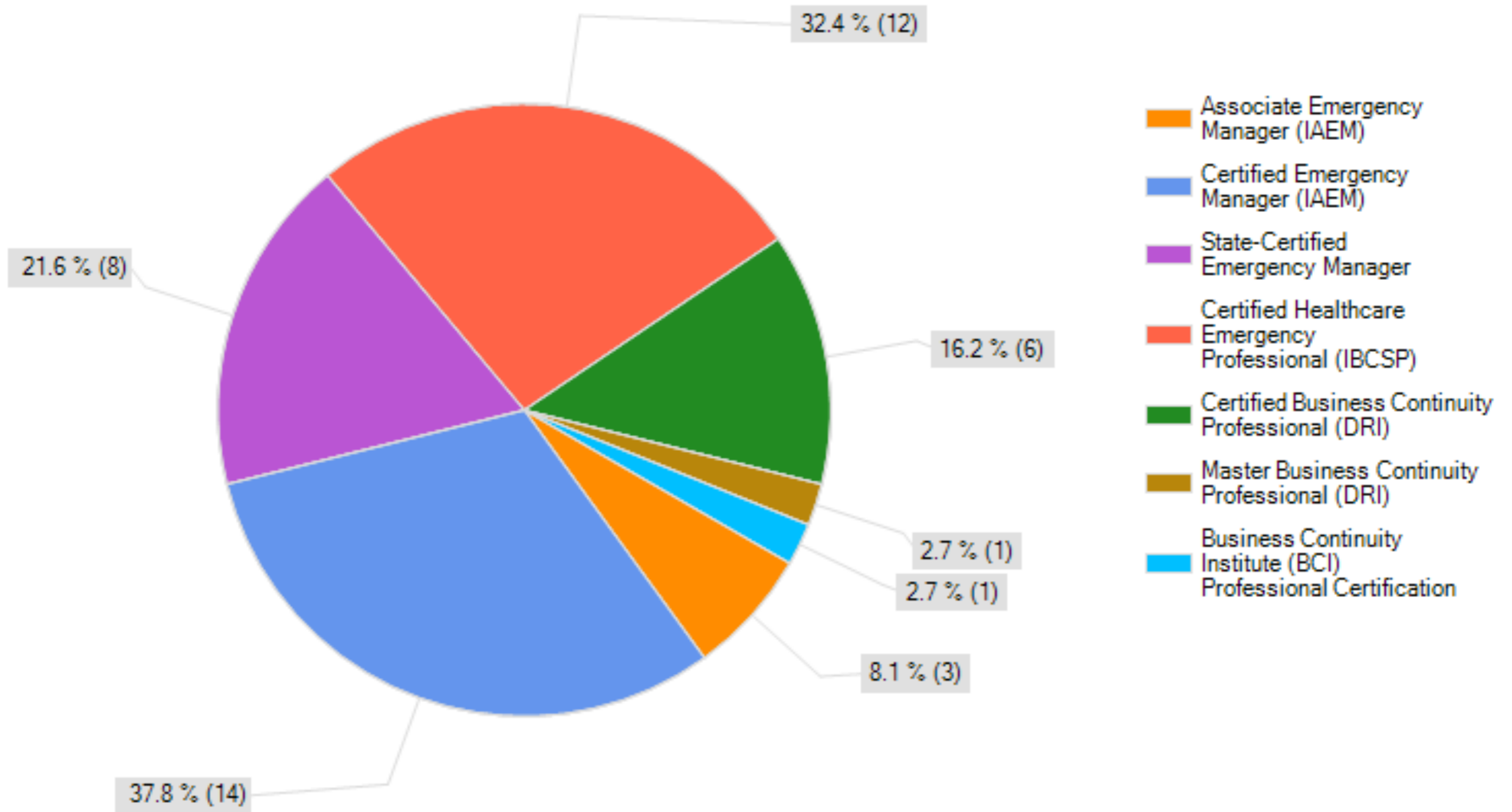
**For non-governmental health emergency managers, what percentage of your program is funded by federal/state/provincial funding?**



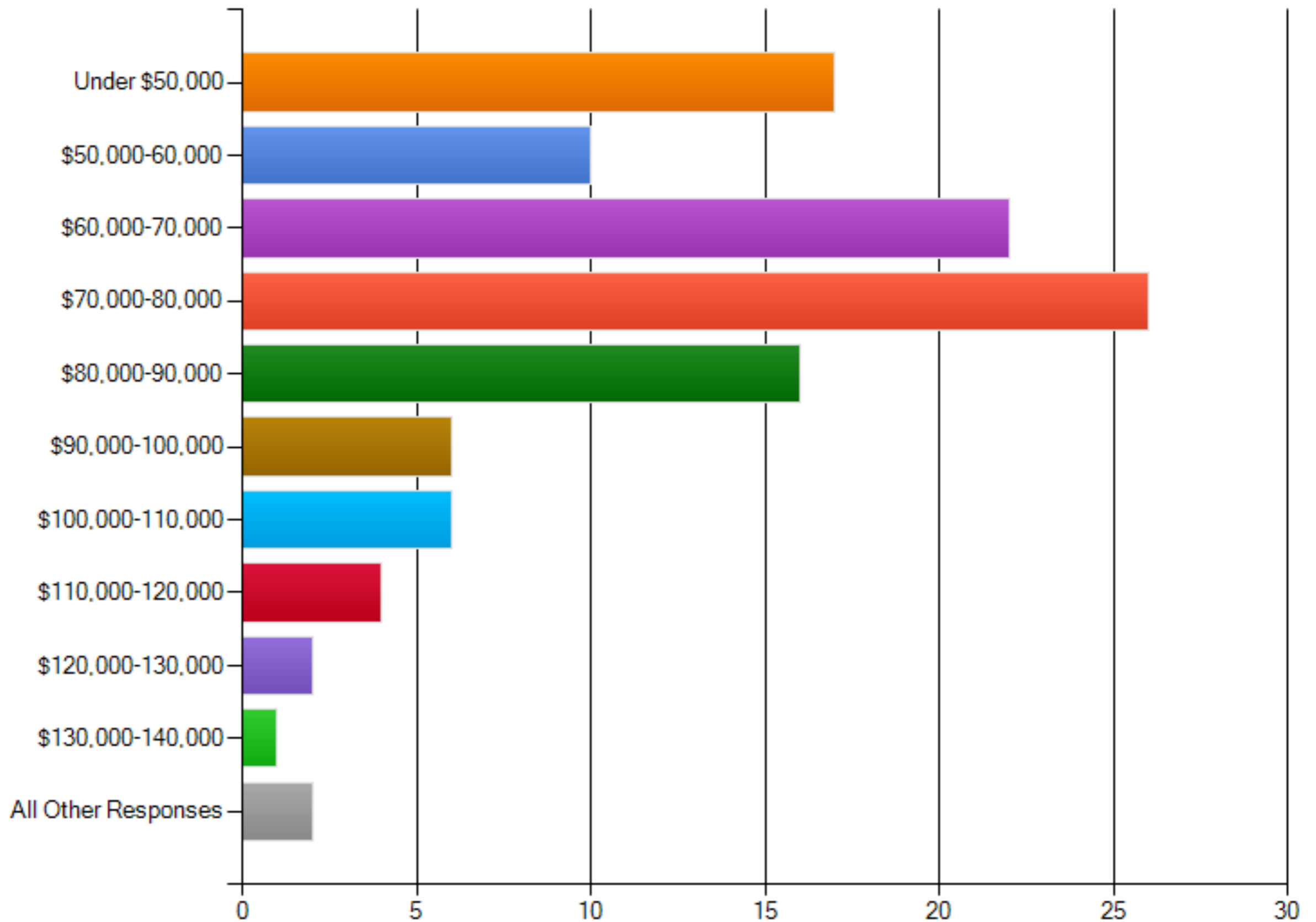
### What is your level of education?



## I hold the following professional emergency management/business continuity certifications:

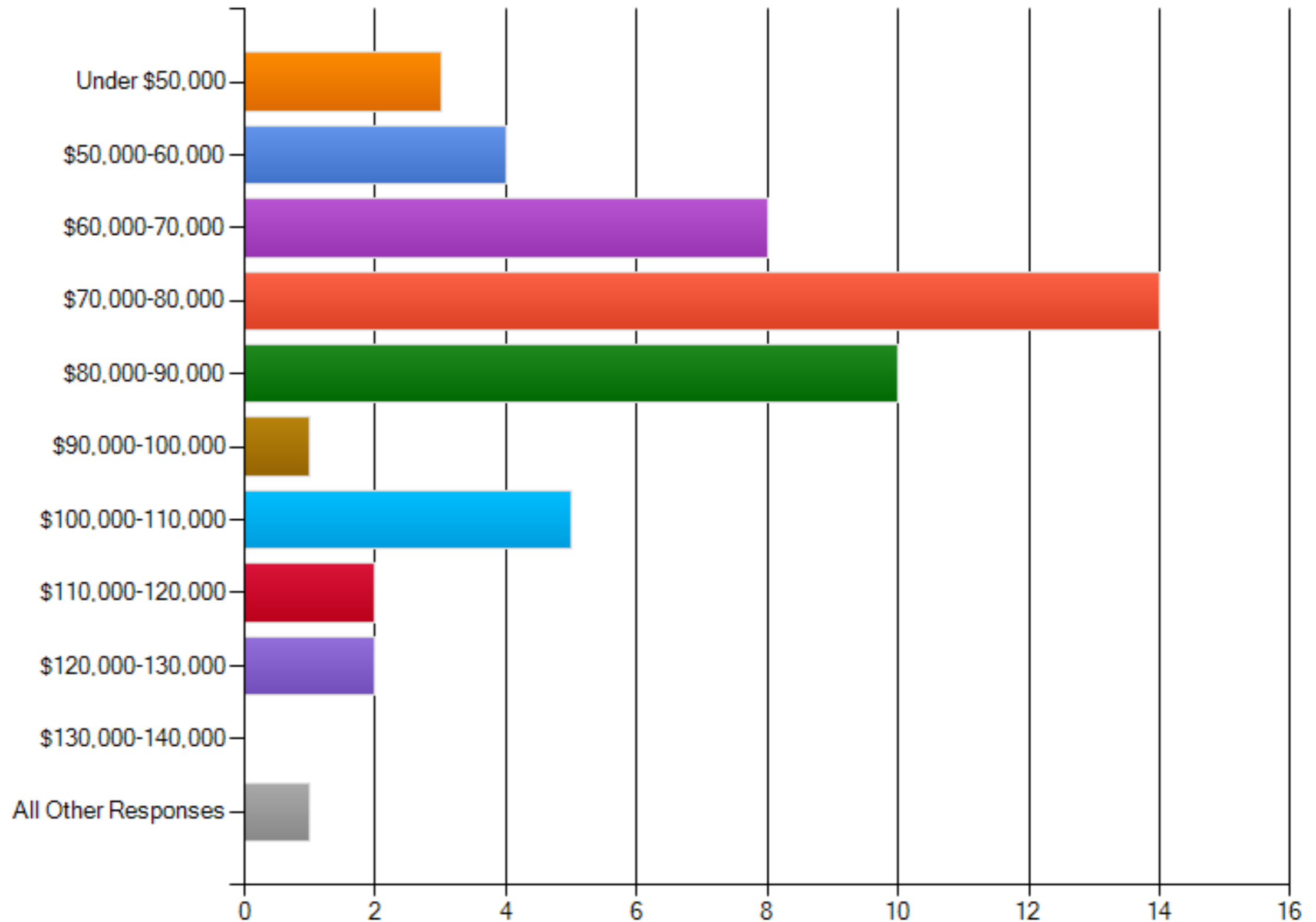


### My total income from emergency management activities is:



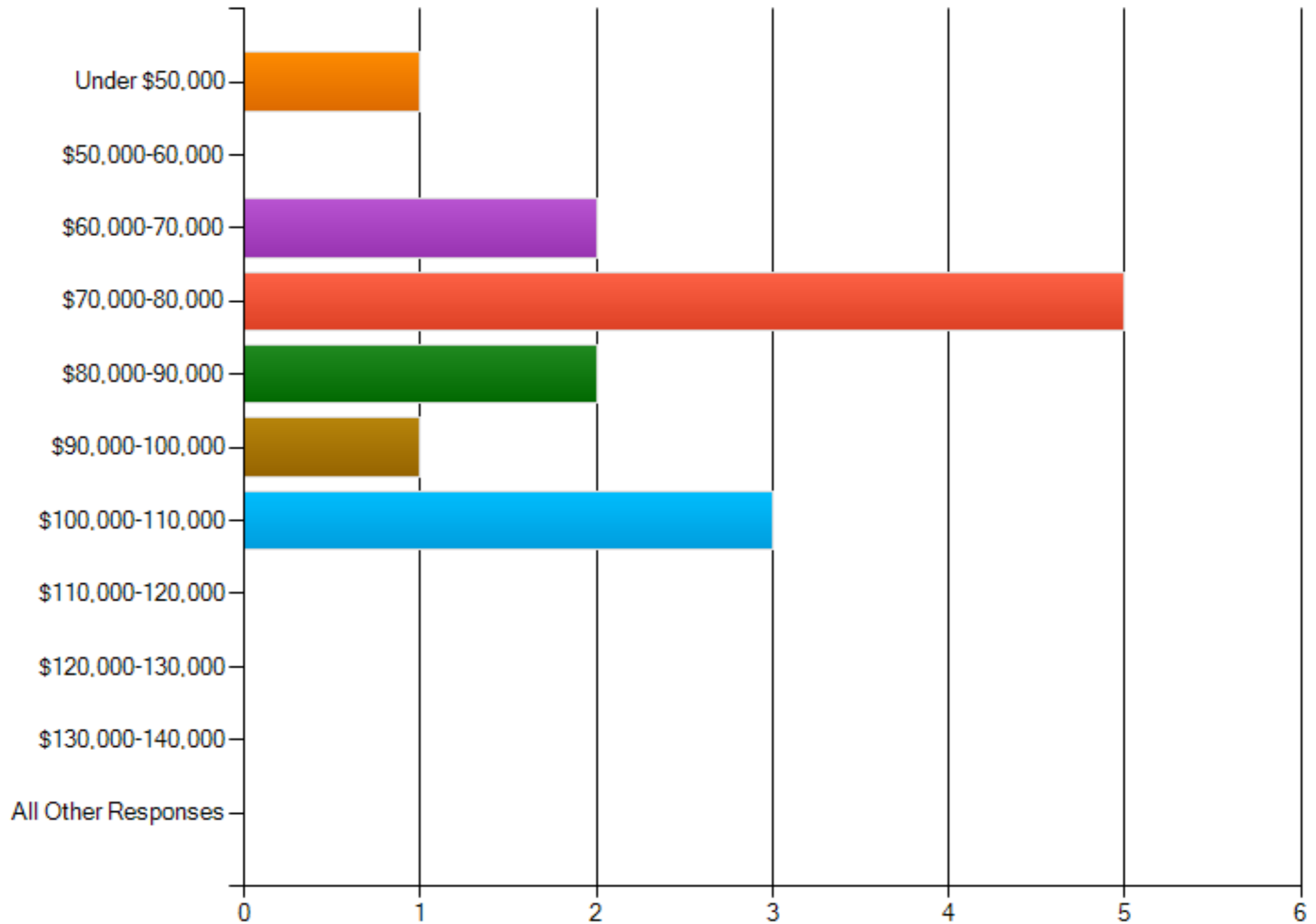
# Income, Masters + Doctoral Degree

**My total income from emergency management activities is:**



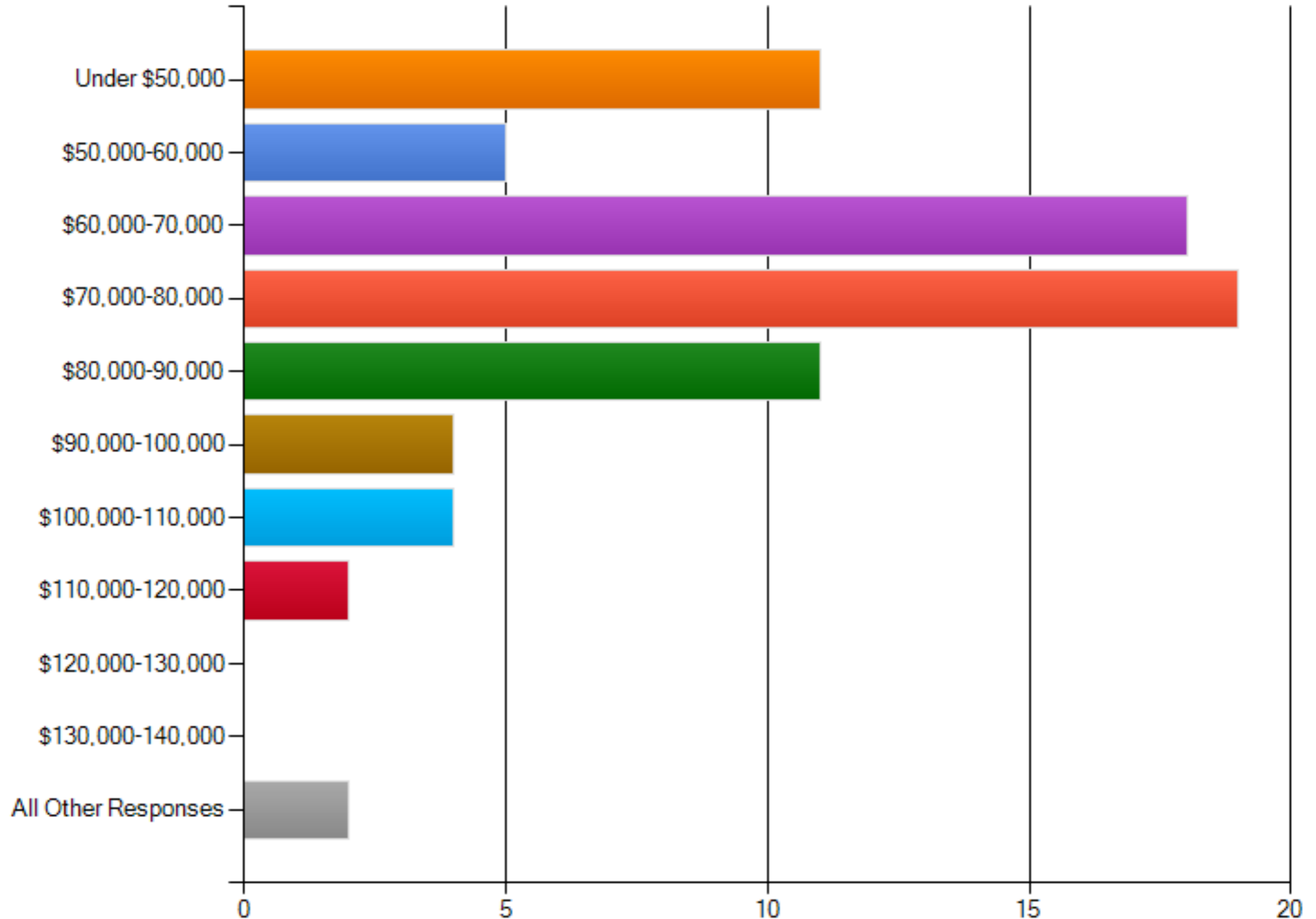
# Income, By CEM

**My total income from emergency management activities is:**



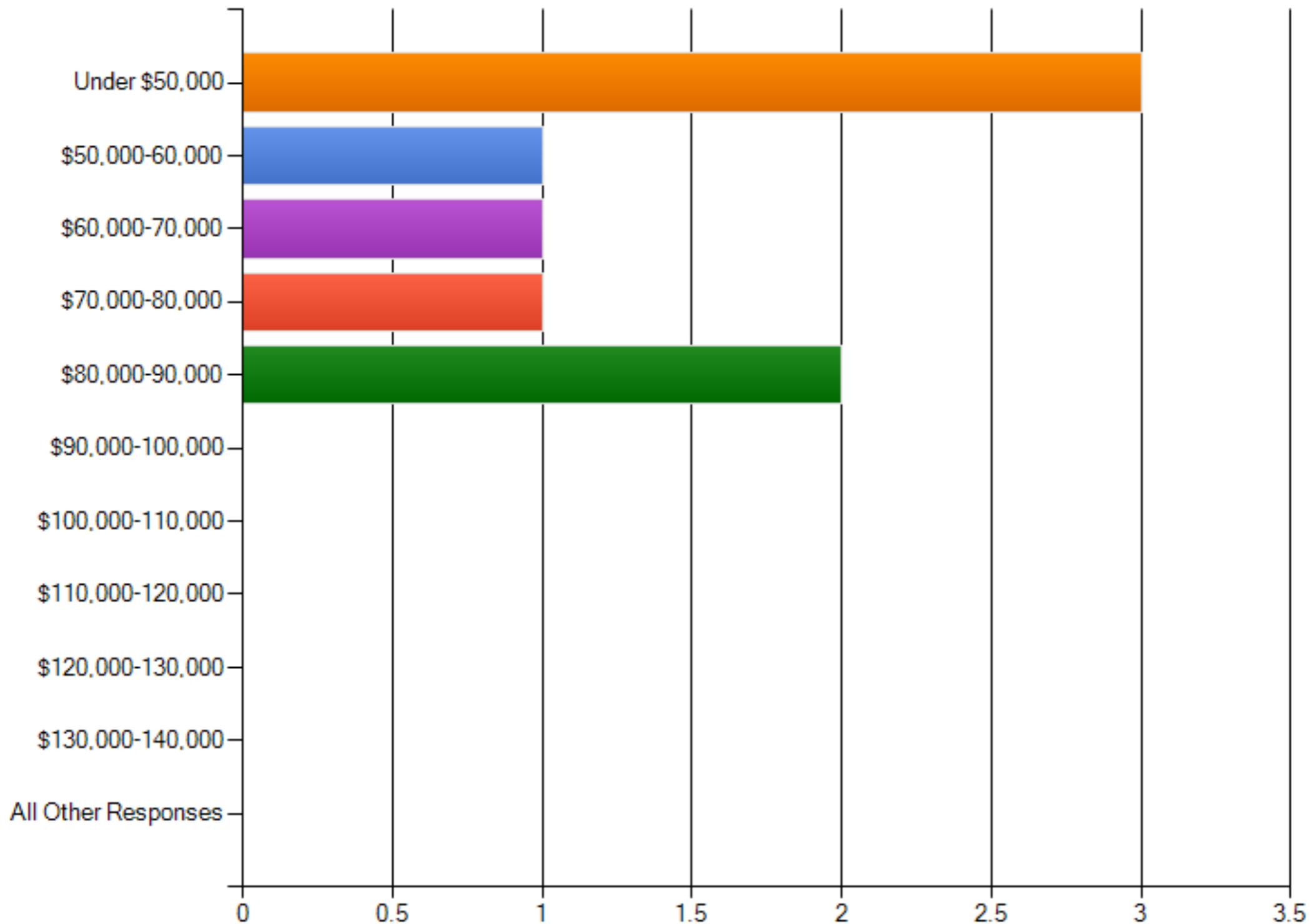
# Income, Hospital

My total income from emergency management activities is:

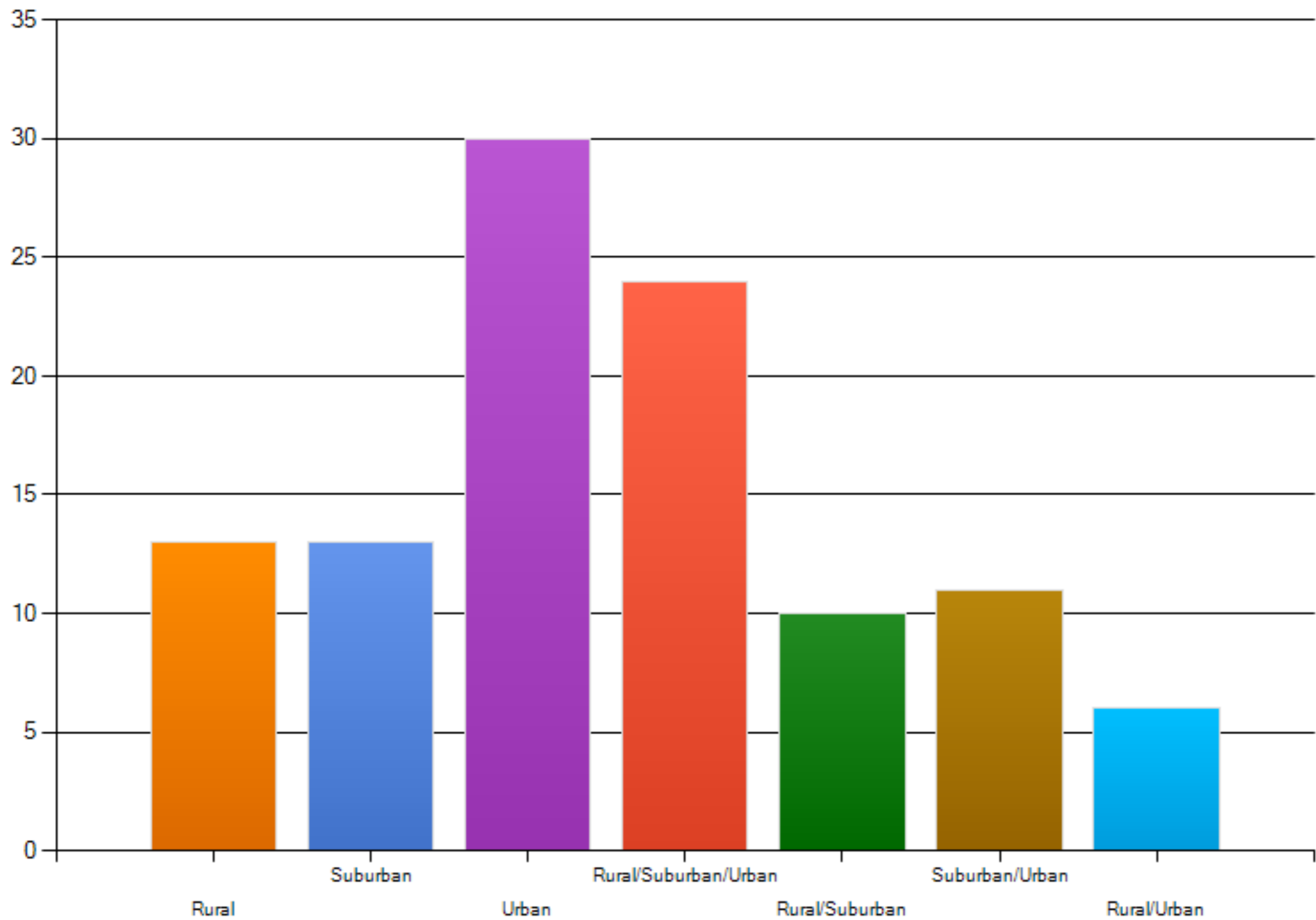


# Income, State + Local Health

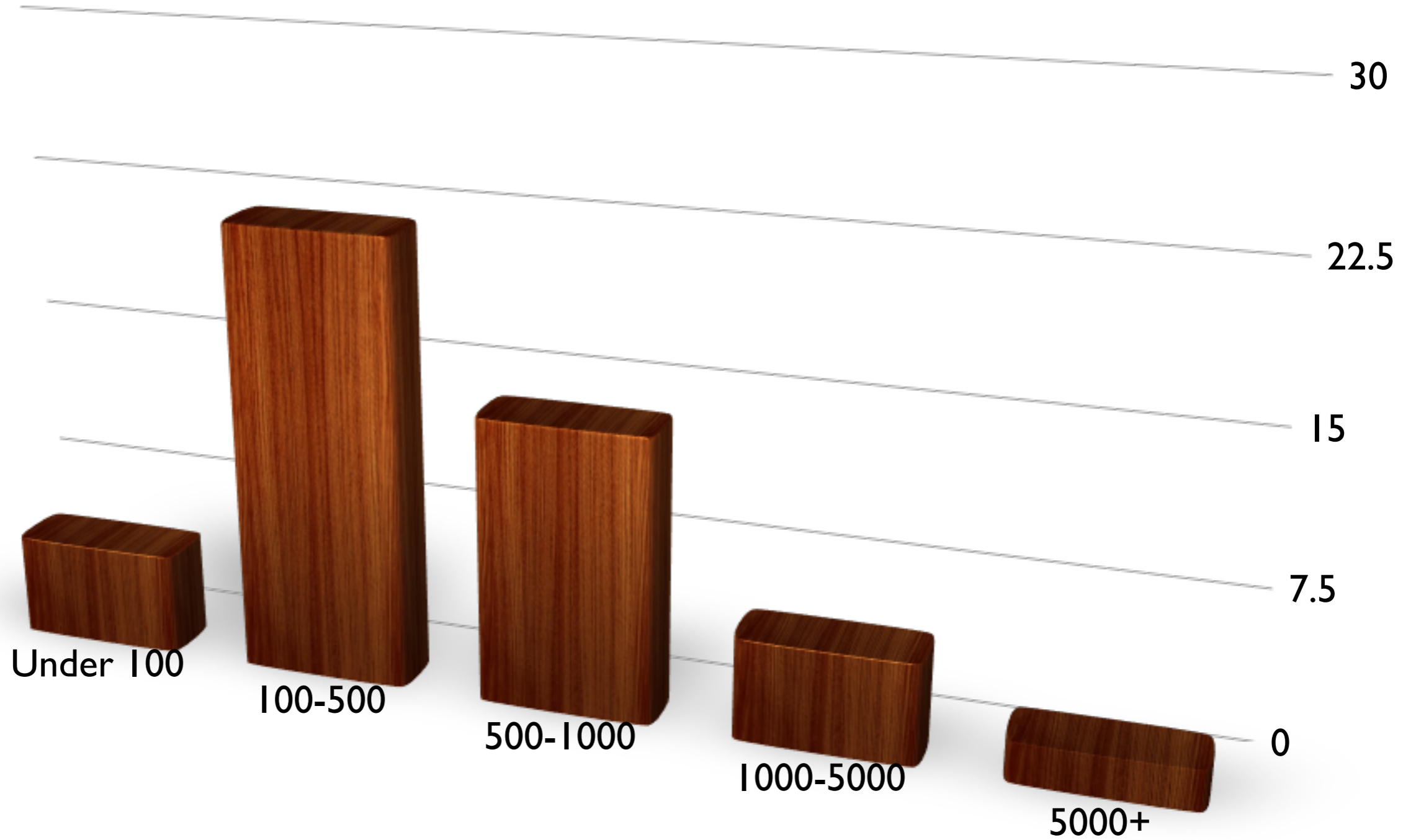
**My total income from emergency management activities is:**



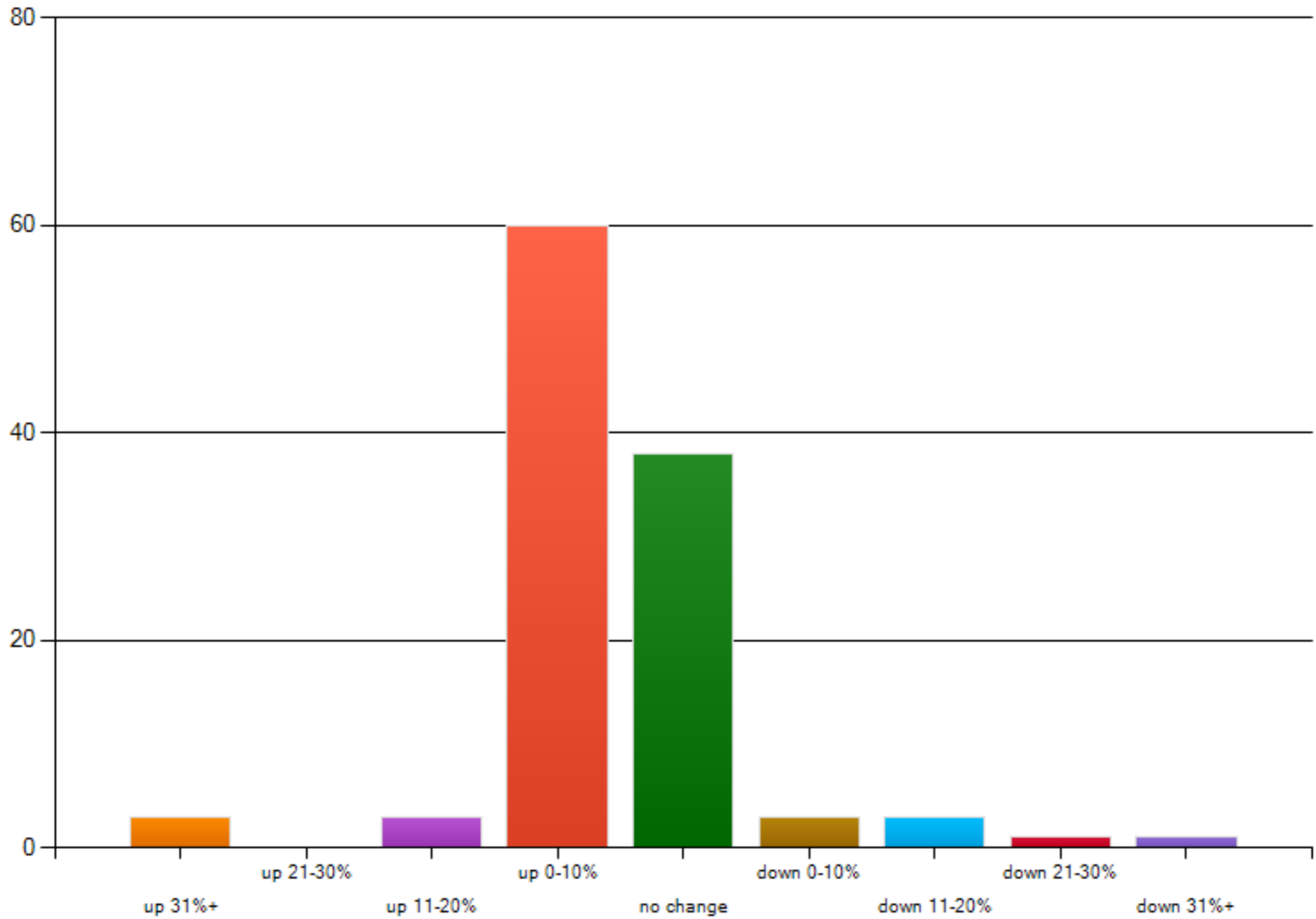
### My healthcare system is located in the following type of environment(s):



# Number of Beds Responsible For



# What has been the change in your income over the past 12 months?



# Themes

- More responsibilities, less budget.
- Less decon, more business continuity.
- Hospitals looking for applicants with less-than-graduate-education, at entry-level salaries, with no desire for professional certifications.
- Executive apathy

